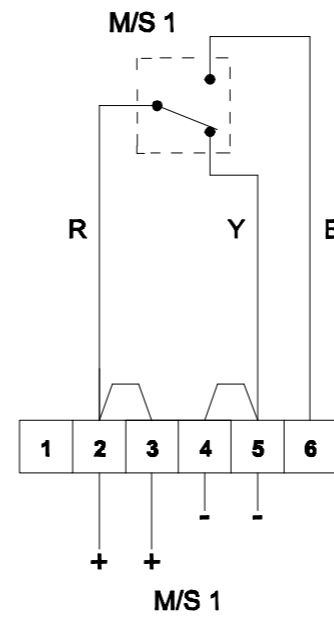


**Unit in 'Standby condition'  
unoperated**

Terminal +(2,3) & (6)  
switch contacts closed

Terminals +(2,3) & -(4,5)  
switch contacts open



**Unit in 'Operated condition'  
(broken glass / Button pushed in)**

microswitch contacts  
changed over

Terminal +(2,3) & (6)  
switch contacts open

Terminals +(2,3) & -(4,5)  
switch contacts closed

Note: Content is for general information only and is subject to change without notification.

THIS DRAWING IS CONFIDENTIAL AND COPYRIGHT PROPERTY OF THE MANUFACTURER AND MUST NOT BE COPIED OR LENT WITHOUT PERMISSION

**Customer:**  
**Project:**  
**PO#**  
**Reference:**  
**Date:**

**Drawing:** D150-06-001      **REV:** 01  
**Title:** **BExCP3-PB Push Button Manual Call Point**  
**BExCP3A-BG/PB/PT Manual Call Point Wiring**  
**Schematic**  
**DATE:** 07/02/20      **DWG BY:** PRDCM



**ProDetec Pty.Ltd.**  
P. +61 (02) 9620 8700  
F. +61 (02) 9620 8755  
E. info@prodetec.com.au  
A. 17/38 Powers Rd,  
Seven Hills NSW 2147  
[www.prodetec.com.au](http://www.prodetec.com.au)