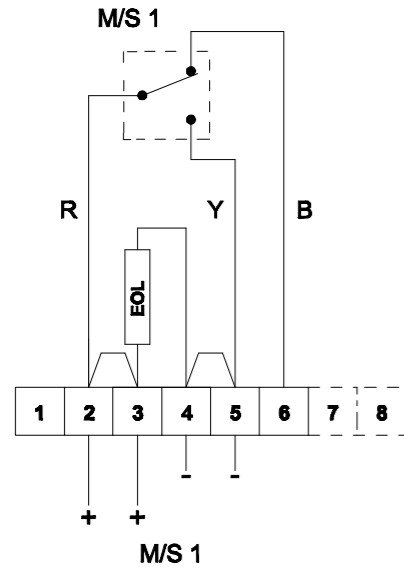
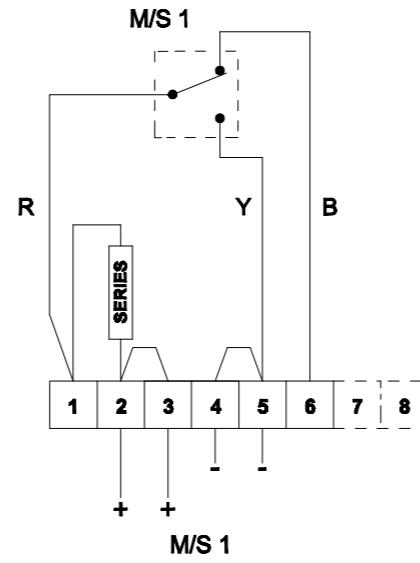


Single Microswitch EOL (End of Line) Device



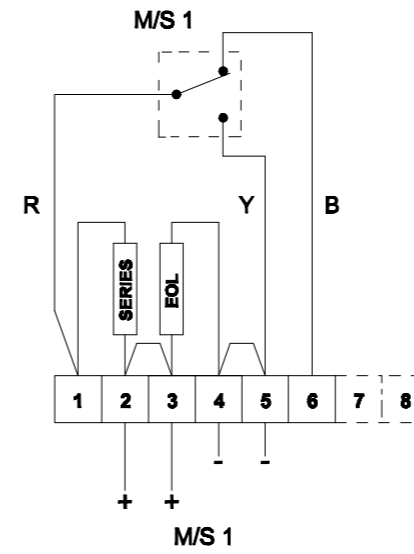
**1A - Circuit shown in Unoperated condition
(Glass Intact / Standby Condition)**
Terminals +(2,3) & -(4,5) open
Terminals +(2,3) & (6) closed

Single Microswitch Series Device



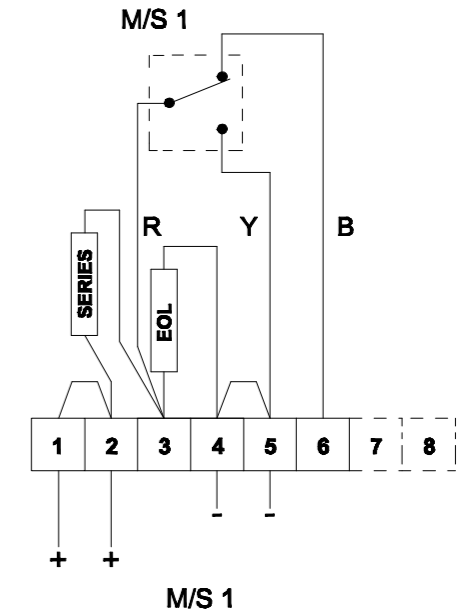
**2A - Circuit shown in Unoperated condition
(Glass Intact / Standby Condition)**
Terminals +(2,3) & -(4,5) open
Terminals +(2,3) & (6) closed

Single Microswitch EOL & Series Device

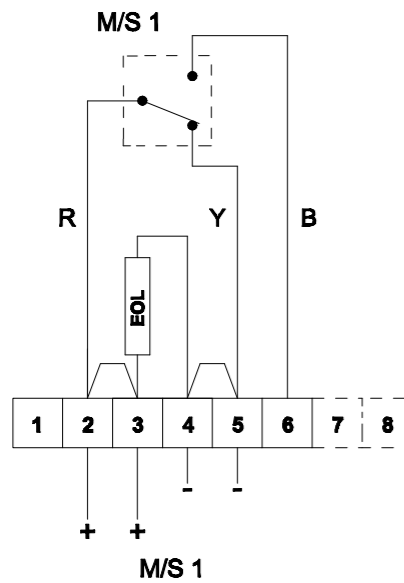


**3A - Circuit shown in Unoperated condition
(Glass Intact / Standby Condition)**
Terminals +(2,3) & -(4,5) open
Terminals +(2,3) & (6) closed

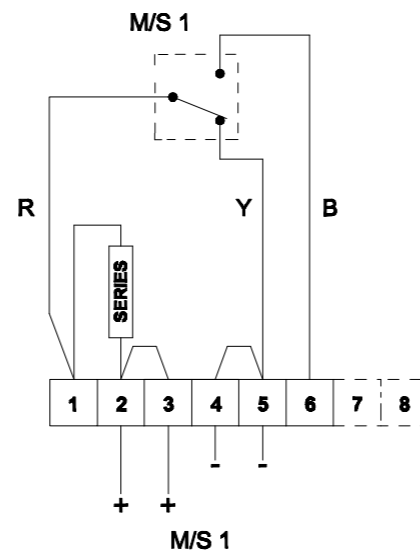
Single Microswitch EOL & Series Device Wiring Option 2



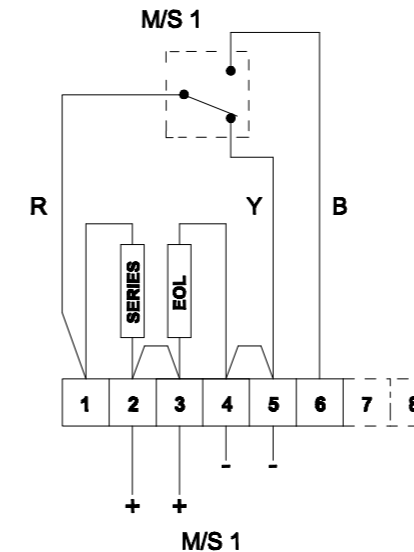
**4A - Circuit shown in Unoperated condition
(Glass Intact / Standby Condition)**
Terminals +(1,2) & -(4,5) M/S 1 open
Terminals +(1,2) & (6) M/S 1 closed



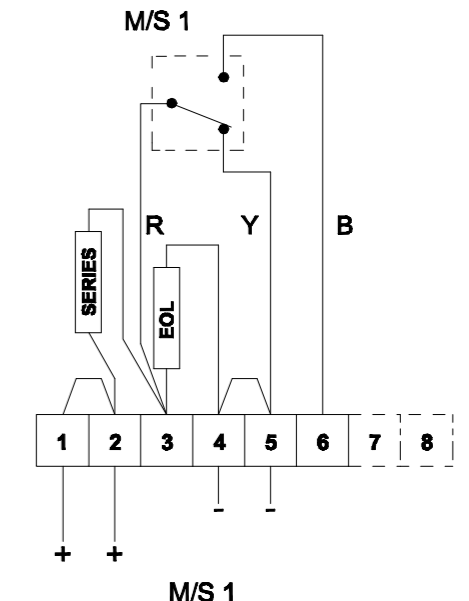
**1B - Circuit shown in Operated condition
(Glass Broken / Button pushed in)**
Terminals +(2,3) & -(4,5) closed
Terminals +(2,3) & (6) open



**2B - Circuit shown in Operated condition
(Glass Broken / Button pushed in)**
Terminals +(2,3) & -(4,5) closed
Terminals +(2,3) & (6) open



**3B - Circuit shown in Operated condition
(Glass Broken / Button pushed in)**
Terminals +(2,3) & -(4,5) closed
Terminals +(2,3) & (6) open



**4B - Circuit shown in Operated condition
(Glass Broken / Button pushed in)**
Terminals +(1,2) & -(4,5) M/S 1 closed
Terminals +(1,2) & (6) M/S 1 open

Note: Content is for general information only and is subject to change without notification.

THIS DRAWING IS CONFIDENTIAL AND COPYRIGHT PROPERTY OF THE MANUFACTURER AND MUST NOT BE COPIED OR LENT WITHOUT PERMISSION

Customer:
Project:
PO#
Reference:
Date:

Drawing: D150-06-051 **REV:** 01
Title: **BExCP3-BG Break Glass Manual Call Point**
BExCP3B/C/D-BG/PB/PT Manual Call Point Wiring Schematic
DATE: 07/02/20 **DWG BY:** PRDCM



ProDetec Pty.Ltd.
P. +61 (02) 9620 8700
F. +61 (02) 9620 8755
E. info@prodetec.com.au
A. 17/38 Powers Rd,
Seven Hills NSW 2147
www.prodetec.com.au