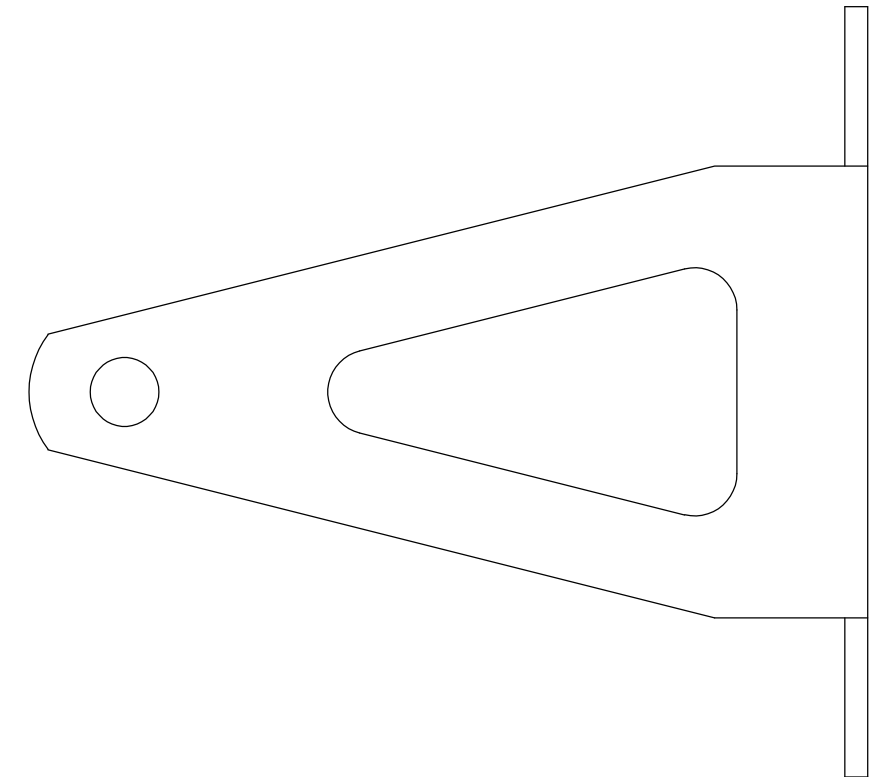
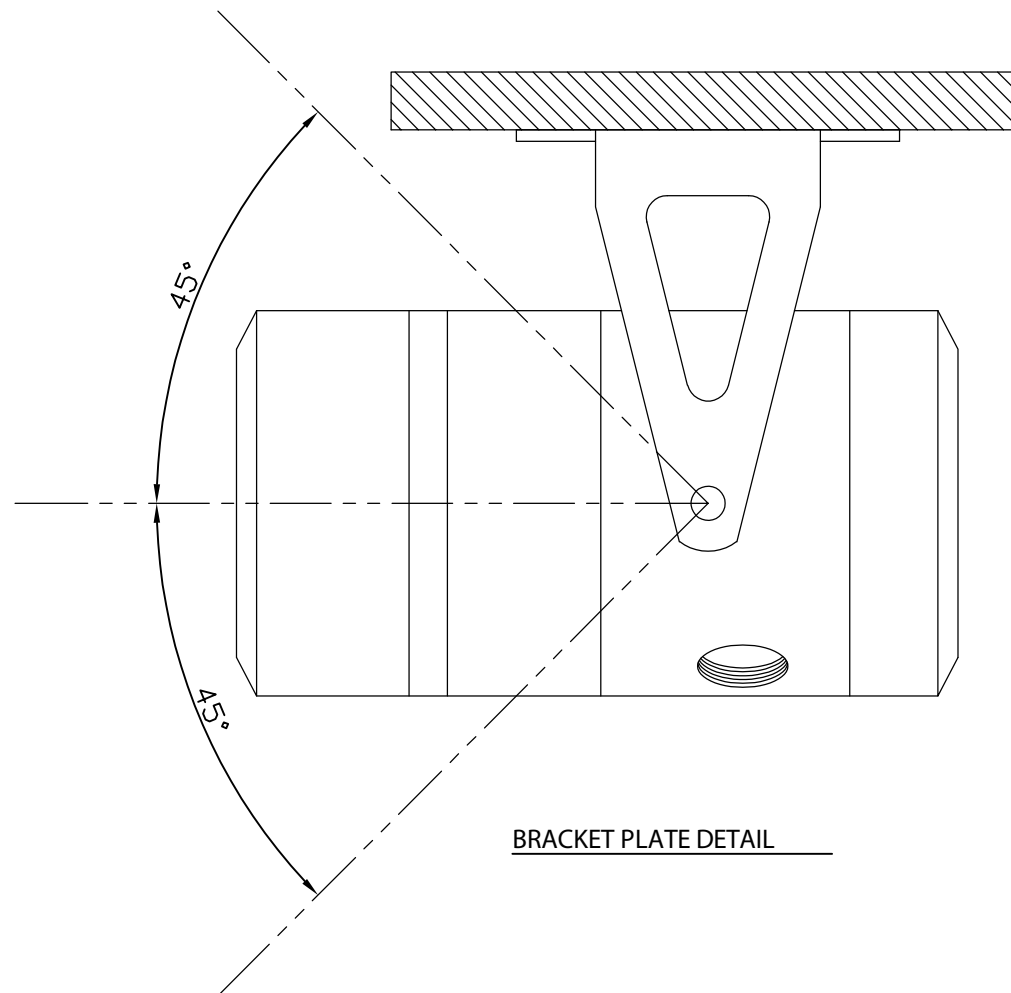


N.B - MOUNTING BRACKET CAN BE FIXED TO A WALL OR CEILING WITH THE 45 DEGREE, BOTH NORTH AND SOUTH, POSITIONS MAINTAINED BE AWARE THAT CABLE GLAND MAY RESTRICT THE DETECTOR BEING ANGLED DOWN DUE TO INTERFERENCE BETWEEN CABLE GLAND AND WALL.



SIDE ELEVATION



BRACKET PLATE DETAIL

ALL DIMENSIONS SHOWN IN MILLIMETERS

Note: Content is for general information only and is subject to change without notification.

THIS DRAWING IS CONFIDENTIAL AND COPYRIGHT PROPERTY OF THE MANUFACTURER AND MUST NOT BE COPIED OR LENT WITHOUT PERMISSION

Customer:
Project:
PO#
Reference:
Date:

Drawing: 2200.0303MD REV: A
Title: **Micropack FDS303 Multi Spectrum IR Flame Detector**
FDS303 - Mounting Detail
DATE: 07/08/20 DWG BY: PRDMB



ProDetec Pty.Ltd.
P. +61 (02) 9620 8700
F. +61 (02) 9620 8755
E. info@prodetec.com.au
A. 17/38 Powers Rd,
Seven Hills NSW 2147
www.prodetec.com.au