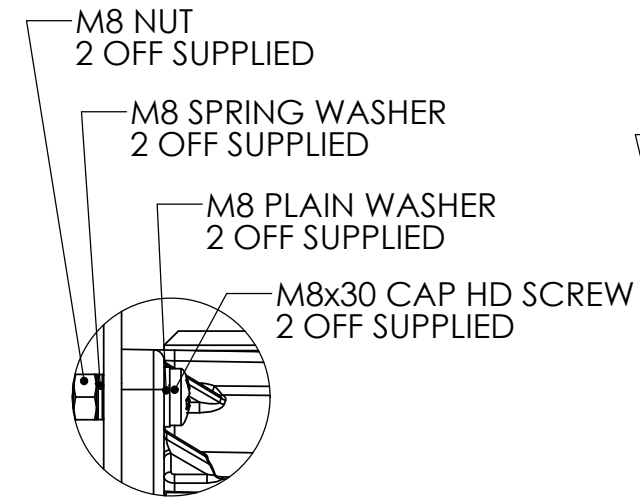
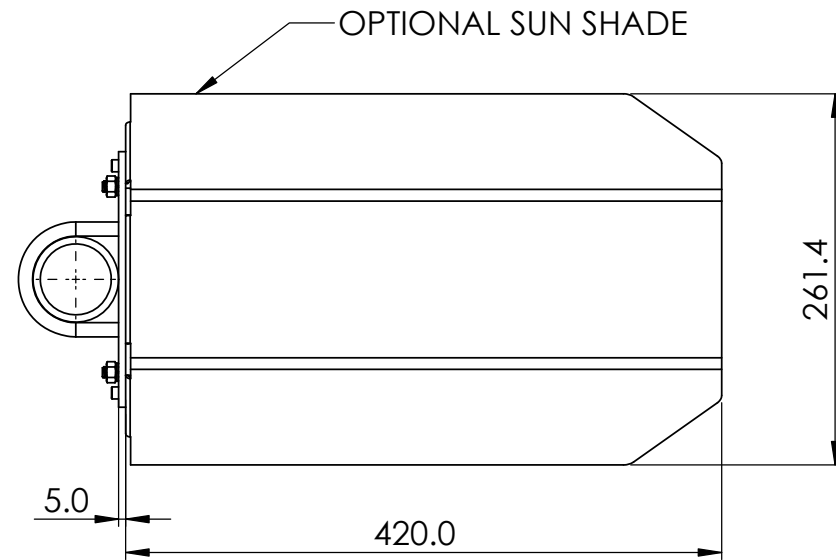
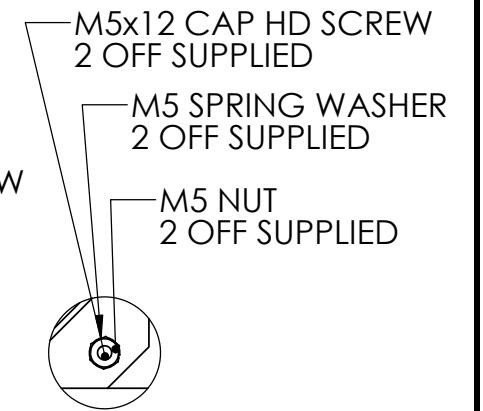


DETAIL A  
SCALE 1 : 2

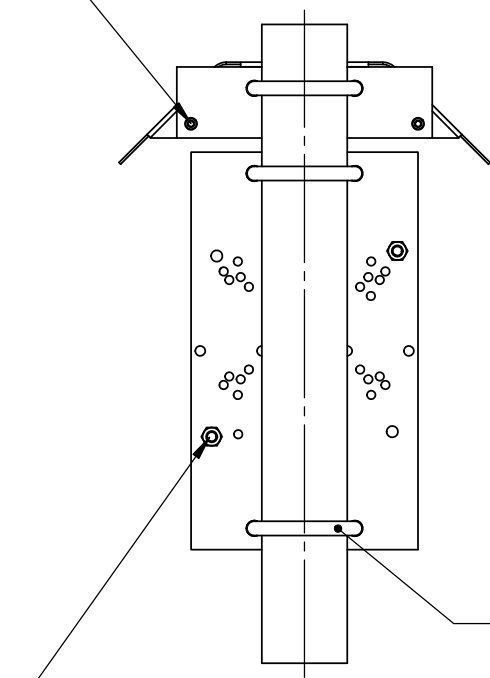


DETAIL B  
SCALE 1 : 2

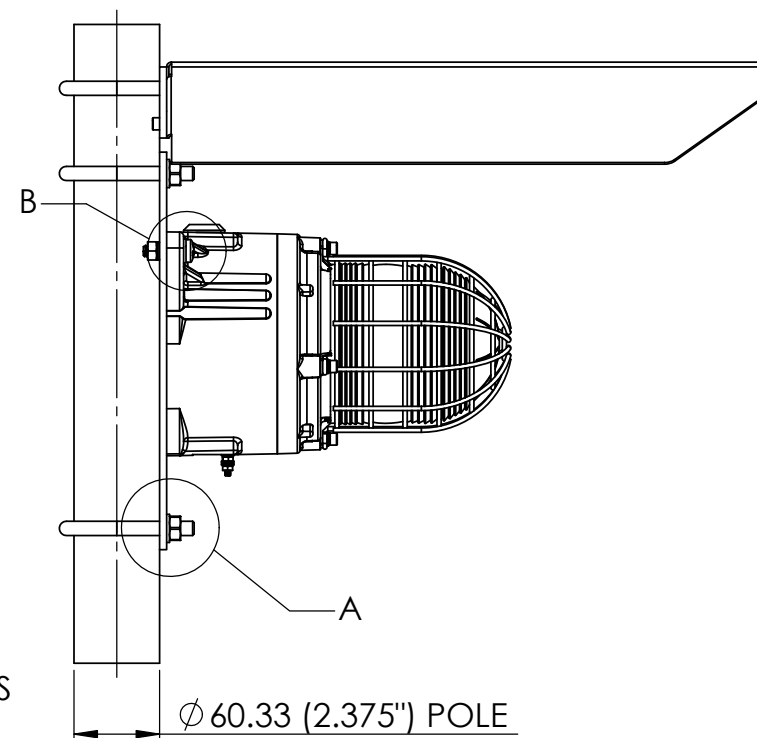


DETAIL C  
SCALE 1 : 2

SUN SHIELD TO BRACKET WITH M5x12  
CAP HD SCREWS IN 2 POS'NS



MOUNT BRACKETS  
TO POLE WITH  
U-BOLTS IN 3 POS'NS



Ø 60.33 (2.375") POLE

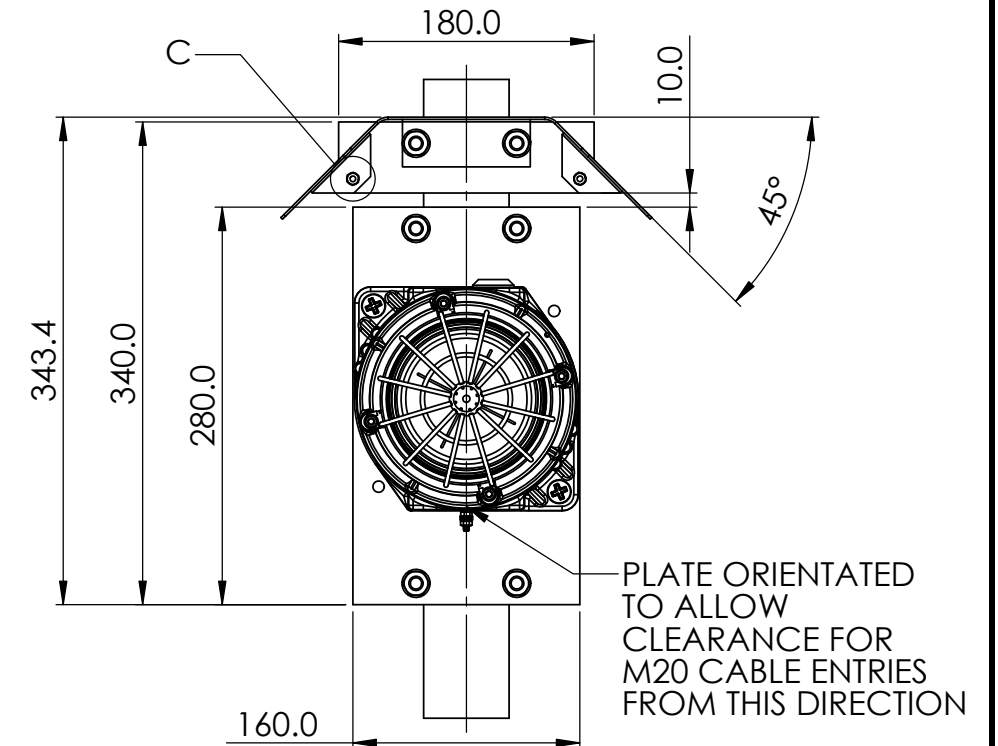


PLATE ORIENTATED  
TO ALLOW  
CLEARANCE FOR  
M20 CABLE ENTRIES  
FROM THIS DIRECTION

Note: Content is for general information only and is subject to change without notification.

THIS DRAWING IS CONFIDENTIAL AND COPYRIGHT PROPERTY OF THE MANUFACTURER AND MUST NOT BE COPIED OR LENT WITHOUT PERMISSION

<b>Customer:</b>	<b>Drawing:</b> D217-05-231	<b>REV:</b> 01
<b>Project:</b>	<b>Title:</b> <b>GNExB2X21 Xenon Strobe Beacon</b>	
<b>PO#</b>	<b>DN 50mm (NPS 2") Pole &amp; Sun Screen GNExB2 Beacons</b>	
<b>Reference:</b>	<b>DATE:</b> 05/01/18	<b>DWG BY:</b> PRDCM



**ProDetec Pty.Ltd.**  
 P. +61 (02) 9620 8700  
 F. +61 (02) 9620 8755  
 E. info@prodetec.com.au  
 A. 17/38 Powers Rd,  
 Seven Hills NSW 2147  
 www.prodetec.com.au